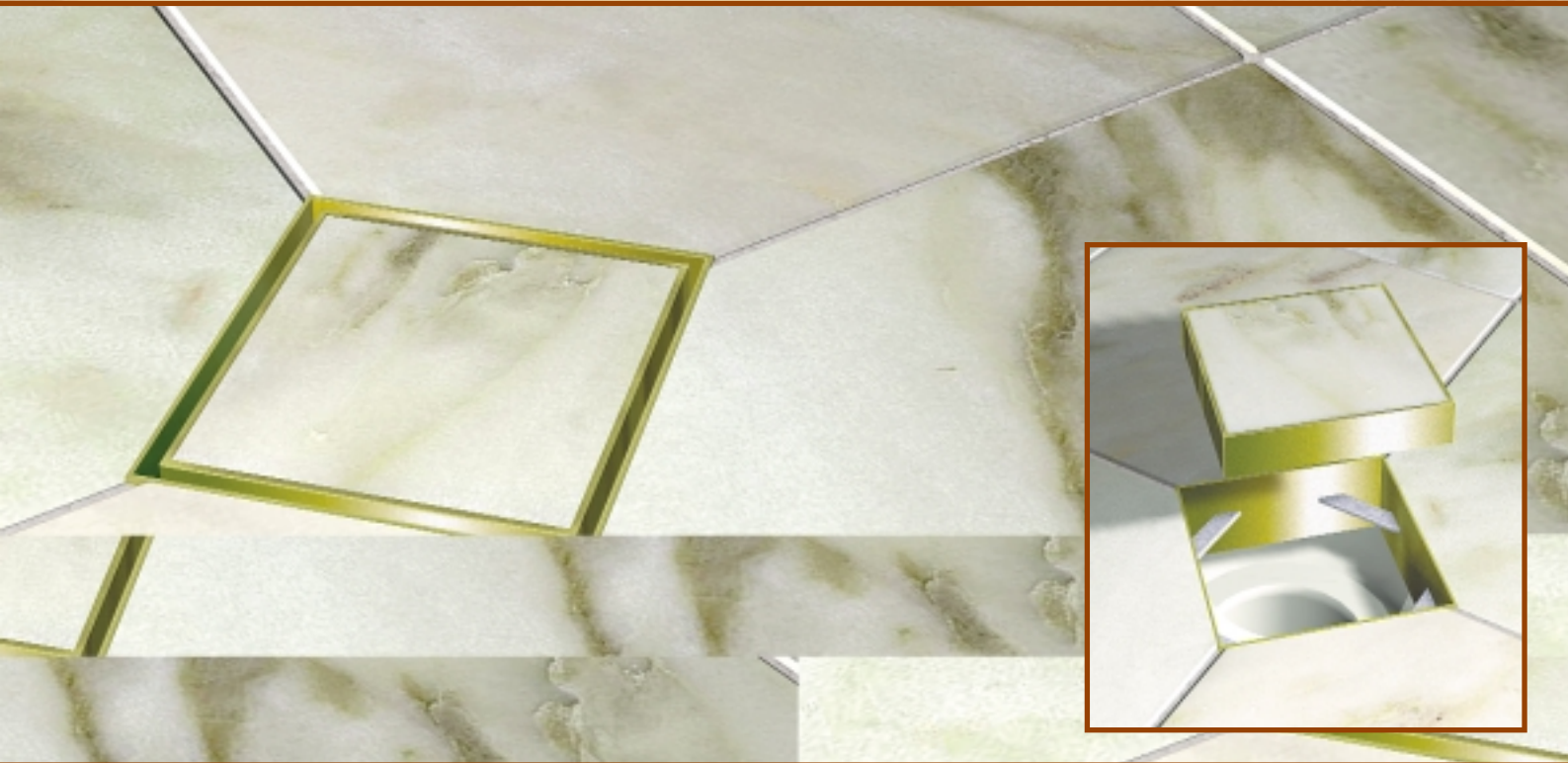
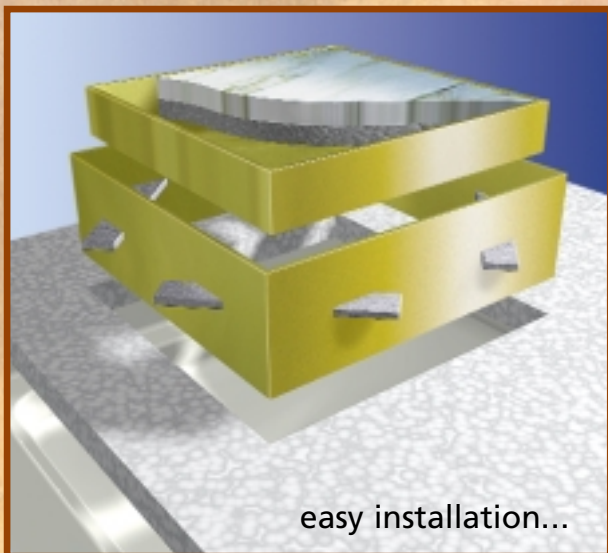


Presenting
SMARTILE®

affordable • unique • beautiful



AN INNOVATIVE BREAKTHROUGH LIFTS IMAGE OF FLOOR GRATES TO A NEW FOCUS IN DECOR.



easy installation...

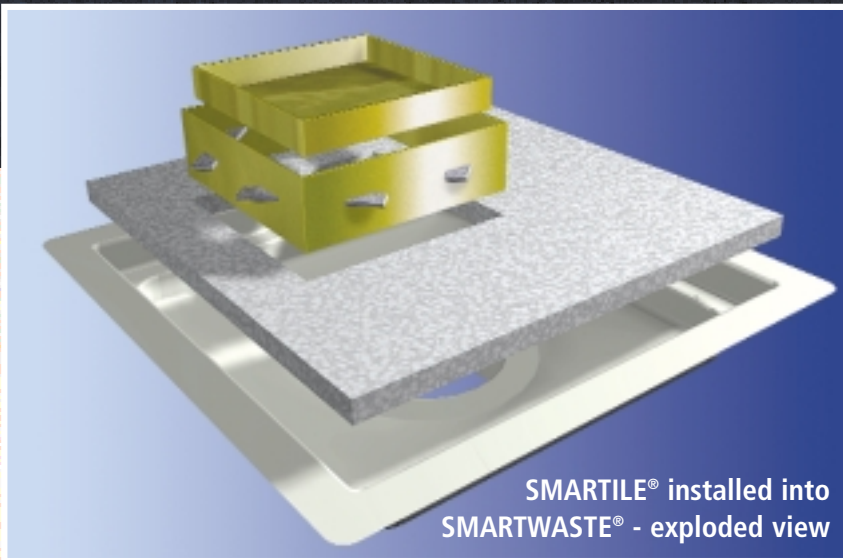


...for a stunning effect

distributed by **IPLEX**
Pipelines

SMARTILE®

affordable · unique · beautiful



SMARTILE® installed into SMARTWASTE® - exploded view

SMARTILE® is an innovative new concept in floor drainage, eliminating the image of a dark and sometimes messy drainage pit in the floor.

SMARTILE® forms a neat crisp edge to surrounding floor tiles giving a 5mm perimeter gap for surface water to escape (double the standard required)

SMARTILE® is readily removable for full access for cleaning and eliminates the difficulty of removing grates for cleaning access.

SMARTILE® is used in conjunction with SMARTWASTE®

SMARTILE® is an **escutcheon** (outer frame) and an **inner tray**, supplied in solid brass or stainless steel. The **escutcheon** is supported on the compressed fibrous cement lid of the **SMARTWASTE®**. The **tray** is supported within the escutcheon on stainless steel bars (12mm X 3mm). These bars are inserted into slots punched in the four corners of the **escutcheon**.

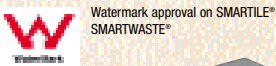
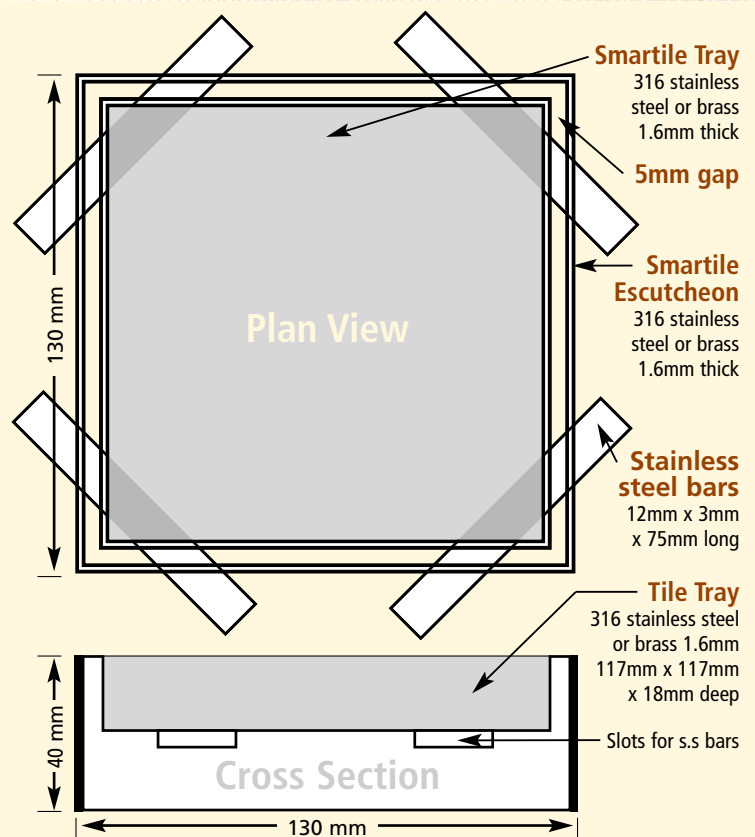
The **tray** is designed to enable tiles up to 15mm thick to be used.

Commercial (heavy duty) model is available in 316 stainless steel, the **escutcheon** 165 x 165mm is 3mm thick. The 25mm deep **tray** is supported on four stainless steel diagonal bars 20mm x 6mm thick, leaving a 10mm gap for water flow.

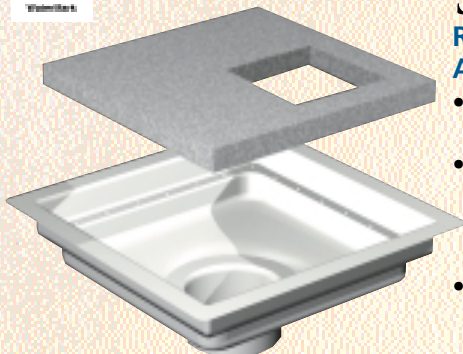
SMARTILE® is installed in a **SMARTWASTE®** using any size of tile, including marble, granite, etc. The **SMARTILE®** is best positioned diagonally in the intersection of four tiles, or alternatively in the centre of the tile, the remainder of the tile cut diagonally in the corners. The **SMARTWASTE®** allows flexibility when positioning the **SMARTILE®**. Advanced planning will ensure that the **SMARTILE®** is located in a good position to effect a perfectly symmetrical tile layout.

Additional care in the planning, setout and fitting of the floor tile into the tray and the tiles adjacent to the escutcheon, will ensure a superb result which will attract attention and pride in this totally new concept in luxury floor finishes.

Thus an attractive focal point is provided in bathrooms, showers and laundries



Watermark approval on SMARTILE® SMARTWASTE®



SMARTWASTE®

Reduces leaks dramatically
Allows flexible positioning for floor grates

- A 350mm square moulded plastic floor waste with compressed fibrous cement lid.
- A large dish drain below floor level, which eliminates leaks around grates and allows symmetrical positioning of grates or SMARTILE® in tiled floors.
- Can be used under washing machines, dishwashers and hot water cylinders to prevent flooding should hoses fail

SMARTCOLLAR®

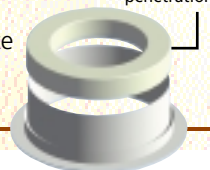
A termite barrier and a support stand for SMARTWASTE® and SMARTPAN®

- The Smartcollar also acts a support stand on slabs on the ground.

On suspended slabs it is nailed to the formwork and can accommodate a fire collar.

CSIRO App#264

Adaptor available to suit any pipe penetration



DISTRIBUTED BY:

IPLEX
Pipelines

© Iplex Pipelines

Australia Pty Ltd ACN 079 613 308

In Australia

In New Zealand

Ph: 13 18 40

Ph: 0800 800 262

Fax: 13 18 60

Fax: 0800 800 804

growth through innovation

Available from:

SMARTILE®, SMARTPAN® and SMARTWASTE® are manufactured in Australia by **Reedwood P/L** Visit our website www.reedwood.com.au