



COMPACT *laminates*

COMPACT *laminates*

What are Compact Laminates?

LAMINEX® COMPACT *laminates* are an innovative and durable decorative panel made from thermosetting resins, homogeneously reinforced with cellulose fibres and manufactured under high pressure and temperature. As such, the panels are strong, self supporting, moisture resistant and durable. The standard panel thickness is 13mm. Panels have a black core that when machined, presents a distinctive black edge. **LAMINEX® COMPACT *laminates*** have an integrated decorative surface, available in selected options from the **LAMINEX® colour palette** and **LAMINEX® innovations® range**.

Where can they be used?

LAMINEX® COMPACT *laminates* can be used on vertical or horizontal applications across a broad spectrum of interior applications. Just some of the uses include: shower and toilet cubicles, interior wall linings, tabletops, laboratory worktops, lockers, office furniture, cabinets and kitchen benchtops. The options are virtually endless.

How do they perform?

Not only are **LAMINEX® COMPACT *laminates*** beautiful in appearance, they can take rough treatment. They're extremely scratch, wear, chemical, moisture and impact resistant. When durability and functionality are a premium, there's no better selection.



As the name suggests, this range has inherent flexibility and is the mainstay of the Compact Laminates family. A versatile panel suitable for a variety of internal applications, **LAMINEX® COMPACT *laminate*** performs with exceptional wear, impact and moisture resistance.

The excellent mechanical and physical properties of **LAMINEX COMPACT *laminate*** makes it ideal for use in all public and leisure places and for furniture requiring durability in design. A self-supporting panel that can be used with minimal structural support, providing a clean, uninterrupted, minimal look. It's ideal for horizontal and vertical design driven applications. The range of colours has been selected from the **LAMINEX® *colour palette*** meaning that panels can easily integrate and coordinate with many other products and surfaces from the Laminex® brand.


LAMINEX® COMPACT *laminate* has a high resistance to organic solvents such as acetone, toluene, xylene and similar substances. The panels are also resistant to disinfectants and cleaning chemicals as well as food juices and dyes, which affect neither the properties nor the appearance.

Standard Sheet Size	Standard Thickness	Typical Applications
1835 x 1820mm	13mm	<ul style="list-style-type: none"> • Shower & Toilet Cubicles • Office Worktops • Interior Wall Cladding • Lockers • Kitchen Benchtops & Cabinetry • Educational Furniture • Durable Furniture
Surface Finish		
Natural		



The **LAMINEX COMPACT laminate** colour range has been selected from the **LAMINEX® colour palette**. Speckle colours help discourage and conceal graffiti and vandalism in public places. The speckle colour is based on selected solid colours from the **LAMINEX® colour palette** with an overlay unique to the **LAMINEX COMPACT laminate** offer.

The Colour Electro Silver is a stunning metallic colour; manufactured using Electron Beam Curing (EBC) surface technology. These enhanced surface properties open an exciting new world of design and suit applications where aesthetics, durability and ease of cleaning or hygiene are paramount.

Manufactured using 

LAMINEX COMPACT *laminate selection palette*



Olive



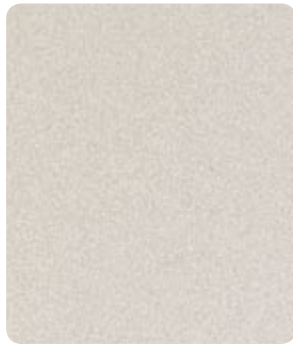
Electro Silver



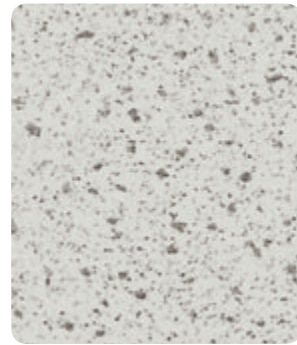
New Graphite



Stipple Seal



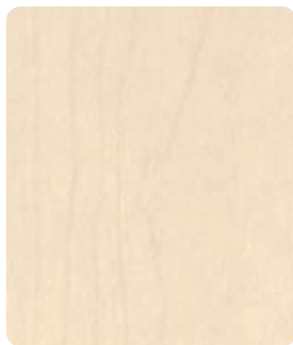
Platinum Micro



Speckle Oyster Grey



Stipple Hemp



Dansk Maple



Nocturnal Oak

Note: Colours are directional and will change subtly according to viewing angle and panel orientation.

COMPACT *laminates material properties*

Property	Unit	Compact Laminates Material Properties				Standard
		Multipurpose		Innovations®		
Physical Properties						
Specific Gravity	Kg/m2	1.4		1.4		ASTM-D 792-91
Weight 13mm thickness	Kg/m2	18.2		18.2		
Panel Tolerance						
Length	mm	+/-5		+/-5		
Width	mm	+/-5		+/-5		
Thickness	mm	+/-0.7		+/-0.7		
Flatness	mm/m	≤2		≤2		
Optical Properties						
Colour Stability	Blue Wool Scale	Minimum 6		Minimum 6		AS/NZS 2924.1
Changes when subject to dry heat (max temperature 180 °C):						
Gloss		Slight Change		No Change		AS/NZS 2924.1
Colour		Slight Change		No Change		AS/NZS 2924.1
Cracking		No Change		No Change		AS/NZS 2924.1
Mechanical Properties						
Modulus of Elasticity	N/mm²	>10000		>10000		DIN 53457
Tensile Strength	N/mm²	>70		>70		DIN 53457
Flexural Strength	N/mm²	>100		>100		DIN 53457
Impact Resistance		Pass		Pass		AS/NZS 2924.1
Scratch Resistance*		Pass		Pass		AS/NZS 2924.1
Wear Resistance		Pass		Pass		AS/NZS 2924.1
Resistance to Steam		Pass		Pass		AS/NZS 2924.1
Thermal Properties						
Application Temperature Dry Heat at 180 °C		Pass		Pass		AS/NZS 2924.1
Fire Properties						
Fire Hazard Indices^	Range	NF#	FR	NF#	FR	AS/NZS 1530.3 1999
Ignability	0-20	11	0	11	0	AS/NZS 1530.3 1999
Spread of Flame	0-10	0	0	0	0	AS/NZS 1530.3 1999
Heat Evolved	0-10	4	0	4	0	AS/NZS 1530.3 1999
Smoke Developed	0-10	4	4	4	4	AS/NZS 1530.3 1999
Cone Calorimeter						
Group Number	1-3	3		3		AS/NZS 3837 1998
Average Specific Extition Area	m2/Kq	204		203.6		AS/NZS 3837 1998

* Depending on colour

^ Panels tested free standing

Standard to the offer

Standard Offer Details

Multipurpose Compact Laminate	
Finish	Natural
Colours	8 Colours
Fire Resistance	Not Standard
Thickness	13mm
Decorated	Double Sided
Core	Black
Panel Dimension	1835 x 1820mm

Innovations® Compact Laminate	
Finish	Natural
Colours	1 Colour
Fire Resistance	Not Standard
Thickness	13mm
Decorated	Double Sided
Core	Black
Panel Dimension	1835 x 1820mm

Supporting Environmental Sustainability

Environmental considerations play an important role in the development of **LAMINEX® COMPACT laminate**. These considerations range from optimal use of raw materials to an extremely long product lifespan. All products have low panel emissions for better indoor air quality.

Minimise Waste

The standard size of **LAMINEX® COMPACT laminates** are well adapted to practical requirements so that cutting waste is kept to a minimum. Combined with the standard thicknesses, they offer economical optimisation for any project requirement. Refer to www.thelaminexgroup.co.nz for additional technical and fabrication details.

Workability

Standard tools for hardwood can be used for machining or processing such as sawing, drilling and routing. Neither the surface nor the sawn edges need to be protected or sealed. Panels will present a distinctive black edge. For further information refer to www.thelaminexgroup.co.nz

Care and Cleaning

The non-porous surface is easy to clean. For general cleaning of standard interior applications, household cleaners, water or soap are highly recommended. The use of abrasive or polishing materials should not be used. For further information refer to www.thelaminexgroup.co.nz

Handling and Storage

For safe material handling and storage procedures refer to www.thelaminexgroup.co.nz





For more product information or order enquiries please phone The Laminex Group on 0800 303 606 to speak with a representative from The Laminex Group. If you require a sample, please phone our Quick Chip Sample Service on 0800 99 99 39 or fax 0800 99 99 59. www.thelaminexgroup.co.nz Laminex® Compact laminate is marketed and distributed by The Laminex Group. A division of FLETCHER BUILDING PRODUCTS LTD.

Trespa® is a registered trade mark of Trespa International. The colours of the photographs depicted in this brochure are as close as photographic lighting and modern printing processes allow. Please refer to a sample chip for exact colours. Laminex and Innovations are the trade marks of Fletcher Building Holdings Ltd and used under licence by The Laminex Group, a division of FLETCHER BUILDING PRODUCTS LTD. © The Laminex Group, 2006.

Laminex®
Inspire your space®