

Commercial Wall Batts™

Thermal and Acoustic Insulation

Product Description and Typical Applications

Commercial Wall Batts deliver excellent thermal and acoustic performance for commercial and domestic applications where steel stud construction is used. They are ideal for installation in wall systems and as an acoustic ceiling overlay. The high thermal performance enables wall systems to easily comply with BCA Part J Total R-value requirements for concrete tilt panel wall construction that is often used for shopping centres, factories, offices and high rise residential buildings.

Commercial Wall Batts are supplied as a roll (2 per pack) and skip chopped every 2700mm. The 2700mm lengths enable fast, cost effective installation with a minimum of cutting and joining.

Physical Characteristics

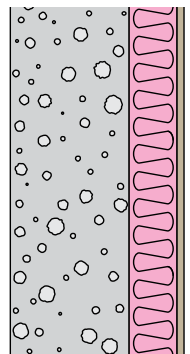
Material R-value (m ² k/w)	Batt Size (mm)	Nominal Thickness (mm)	Nominal Density (kg/m ³)	Length Per Roll (m) x 2	Batts Per Pack	Coverage Per Pack (m ²)
R0.7	2700 x 600	25	22	27	20	32.4
R1.0	2700 x 600	38	22	16.2	12	19.4
R1.4	2700 x 600	50	22	16.2	12	19.4
R1.8	2700 x 600	64	22	13.5	10	16.2

Concrete Tilt Panel Wall System

Summer Total R2.0 / Winter Total R2.2

External 150mm concrete tilt panel and 64mm steel stud with 64mm *Commercial Wall Batts* infill and 10mm plasterboard internal lining. Summer calculations based on ambient air temperature at 36°C and internal 24°C and Winter calculations based on ambient air temperature at 12°C and internal 18°C in accordance with AS/NZS 4859.1 (2002) – Amendment 1 (2006).

*Material R-value of 150mm concrete is R0.1



Green Star Compliant

Fletcher Insulation is committed to providing environmentally sustainable products. *Fletcher Insulation* products have Zero Ozone Depleting Potential in both manufacture and composition, complying with the GreenStar Insulant ODP Emissions credit requirement. Air quality is maintained with total Volatile Organic Compound (VOC) emissions below quantifiable levels.

AS/NZS 4859.1 Materials for the Thermal Insulation of Buildings

Commercial Wall Batts comply with the Energy Efficiency provisions of the BCA for all types of thermal insulation to be certified by a NATA accredited organisation.



Global-Mark.com.au®
ID Number: 100577



Global-Mark.com.au®





The production of environmentally sustainable FBS-1 Glasswool Bio-Soluble Insulation utilizes approximately 70% recycled waste glass.



Low Allergen content with the ability to moderate temperature changes.



Fletcher Insulation glasswool products are manufactured from FBS-1 Bio-Soluble Glass Wool™. FBS-1 Bio-Soluble Glass Wool™ is not classified as hazardous according to the criteria of the Australian Safety and Compensation Council (formerly NOHSC), Approved Criteria for Classifying Hazardous Substances (NOHSC: 1008) 3rd Edition. Fletcher Insulation glasswool is classified as safe to use, refer to our MSDS.



Technical Data Sheet

AS1530.1 Test for Combustibility of Materials

Testing conducted by CSIRO in accordance with AS1530 Part 1 concluded that *Commercial Wall Batts* are non-combustible.

The BCA deemed to satisfy provisions require walls important to the structural integrity of commercial buildings to be constructed wholly of materials that are non-combustible. Fire rated (FRL) walls between tenancies and common walls of multi-level apartment buildings also must be constructed wholly of materials that are non-combustible. The BCA states that if materials used in an assembly contain combustible components, then the assembly is combustible.

Incorporating non-combustible *Commercial Wall Batts* into wall systems allows builders to gain acoustic and thermal benefits while still complying with the BCA requirement to maintain structural integrity and for minimizing risk to occupants from smoke inhalation and fire in Class 2 to 9 buildings.

AS1530.3 Early Fire Hazard Properties of Materials

Commercial Wall Batts exhibit the following characteristics when tested in accordance with AS1530 Part 3.

Ignitability Index	0
Spread of Flame Index	0
Heat Evolved Index	0
Smoke Developed Index	0-1

Moisture Resistance

In the event of *Commercial Wall Batts* becoming wet, they should be dried prior to installation to obtain maximum performance and prevent damage to other building elements. *Commercial Wall Batts* absorb less than 0.2% moisture by volume when exposed to environmental conditions of 50°C and 95% relative humidity for four days.

Alkalinity

When tested in accordance with British Standard 3958, *Fletcher Insulation* glasswool products are slightly alkaline pH9 (neutral is pH7). They will not promote or accelerate the corrosion of steel or galvanised steel studs provided they are protected from external contamination.

Maximum Service Temperature

Fletcher Insulation Commercial Wall Batts have a maximum service temperature of 340°C.

Specification Notes

State the following:

- Product name - *Commercial Wall Batts*
- Material R-Value required
- Joist or stud spacing
- Area involved

Fletcher
Insulation™

Freecall SALES **1300 65 44 44** Technical Services **1800 000 878**
Email info@insulation.com.au Web www.insulation.com.au

Note: Fletcher Insulation (NSW) Pty. Ltd. reserves the right to change product specifications without prior notification. Information in this Publication and otherwise supplied to users as to the subject product is based on our general experience and is given in good faith, but Because of the many particular factors which are outside our knowledge and control and affect the use of products, no warranty is given Or is to be implied with respect to either such information or the product itself, in particular the suitability of the product for any particular purpose.

The purchaser should independently determine the suitability of the product for the intended application.

Fletcher Insulation (NSW) Pty. Ltd. ABN 72.001 175 355. ™Trademarks of Fletcher Insulation.

™FBS-1 Bio-Soluble Glass Wool is a trademark used under license by Fletcher Insulation.

©Copyright 2008 YPA/5585/FEB09