

THERMAL INSULATION

Pink® Batts® BIB



Application

Pink® Batts® BIB (Building Insulation Blanket), is a light weight flexible glass wool insulation product designed to:

- Thermally insulate commercial and industrial building
- Fit easily into standard framework, or be easily cut to fit into non standard framework
- Meet the requirements of the New Zealand Building Code (NZBC) for different designs and environments

Features and Benefits

- Energy saving, reducing the ongoing running costs of the building
- Non-combustible, will not burn for a safer environment
- Available with foil facings to save on installation time
- Absorbs sound, reducing rain noise
- Light weight and flexible allowing for simple installation

Environment

- Manufactured using up to 80% recycled glass, making sustainable use of waste
- Locally manufactured in Auckland and Christchurch, minimising shipping distances compared to imported products

Potential Green Star NZ Credits

Green Star NZ is a comprehensive environmental rating system for buildings. Pink® Batts® insulation may contribute to the following points under Green Star Office Design V.1:

EMI-8	One point	Thermal insulation avoids the use of ozone depleting substances in both manufacture and composition.
MAT-11	One point	90% or more of the thermal insulation used is certified through a recognised a body (e.g., NZ Environmental Choice) as having lower environmental impact.

Certification and further information is available at www.nzgbc.org.nz

While only the higher R-value products are eligible for Environmental Choice, all Pink® Batts® Thermal Insulation Products are manufactured in the same environmentally considerate way

Health

Product Safety

Pink® Batts® insulation is a non hazardous, safe product

- IARC (International Agency for Research on Cancer) classifies glass wool formulation used to manufacture Pink® Batts® products as Group 3: 'Not classifiable as to its carcinogenicity to humans'
- This the same classification as caffeine, tea, hair colouring, chlorinated drinking water, saccharin
- Pink® Batts® insulation is bio-soluble. In the unlikely event any fibres are inhaled into the lungs they will dissolve in the body fluids and be cleared from the body





THERMAL INSULATION

Pink® Batts® BIB

Technical Data

Properties	Result		Test Method/Standard	Test Results
Combustibility	Non-Combustible	✓	NZS/AS 1530.1:1994	
Flammability	Non-Flammable	✓	NZS/AS 1530.3:1993 Ignitability (Range 0-20) Spread of Flame Index (Range 0-10) Heat Evolved Index (Range 0-10) Smoke Developed Index (Range 0-10)	= 0 = 0 = 0 = 0-1
R-value	Various*	✓	AS/NZS 4859.1:2002	
Corrosion	Non-Corrosive	N/A	AS/NZS 4859.1:2002-Glasswool exempt	
Moisture Absorption	Non-Hygroscopic	N/A	AS/NZS 4859.1:2002-Glasswool exempt	
Vermin Resistance	No Food Source	✓	AS/NZS 4859.1:2002-Glasswool exempt	

*Refer to product specifications

Acoustic Properties

Pink® Batts® insulation will assist with noise control, particularly rain drum under long run roofing, however any penetrations in roofing or walls will transmit sound readily. Superior noise control can be achieved by using Pink® Batts® insulation products in conjunction with good acoustic design.

New Zealand Building Code (NZBC) and Limitations

Pink® Batts® building insulation blanket when used, installed and maintained in accordance with the requirements outlined in this datasheet will meet, or contribute to meeting the following provisions of the NZBC:

NZBC Clause B2: Durability

Meets the requirement NZBC B2.3.1 a) 50 years and NZBC B2.3.1 b) 15 years

NZBC Clause E2: External Moisture

Contributes to meeting these requirements

NZBC Clause E3: Internal Moisture

Contributes to meeting these requirements

NZBC Clause F2: Hazardous Building Materials

Meets this requirement and will not present a health hazard to people

Limitations

To meet the provisions of the NZBC as outlined in this datasheet,

Pink® Batts® building insulation blanket *must* be:

- Installed and maintained in a dry protected environment
- Installed in a building where the provisions of NZBC E2 and E3 are met

Pink® Batts® building insulation blanket should *not* be:

- Crushed or folded
- Used where the maximum operating temperature is above 120°C (Faced product may be lower)

THERMAL INSULATION

Pink[®] Batts[®] BIB



Installation Instructions

Correct installation with no compression, gaps or folds is critical to ensure Pink[®] Batts[®] Building Insulation Blanket performance is not compromised

Tools:

- Knife
- Protective loose fitting, long sleeved clothing
- Dust mask
- Gloves
- Safety goggles

Safety

- Ensure safety measures for working at height are in place (refer to the Health and Safety in Employment Act)
- Be careful not to cut or expose cables and wires
- Beware of other sharp objects, nails, splinters etc

Installation Instructions: Roof Applications

The methods of application described in this document are the most commonly used in New Zealand, and should not be taken as specific design

Roof Installation:

- Ensure the product is installed dry. If the product is wet, replace before installing
- Full support of insulation on mesh or safety netting is required
- A 25mm clearance must be maintained between the insulation and roofing underlay. See diagrams overleaf for typical installations
- Fit insulation tightly around all roof penetrations, vent pipes etc
- Where flues or other similar heat emitting elements pass through the insulation layer a 150mm clearance should be maintained between that item and the insulation
- Where cutting is necessary use a sharp knife and straight edge
- Fit Pink[®] Batts[®] insulation beneath electrical wiring and plumbing (see caution below)

Caution: Electrical cables and equipment partially or completely surrounded with bulk thermal insulation may overheat and fail. This applies to wiring installed prior to 1989

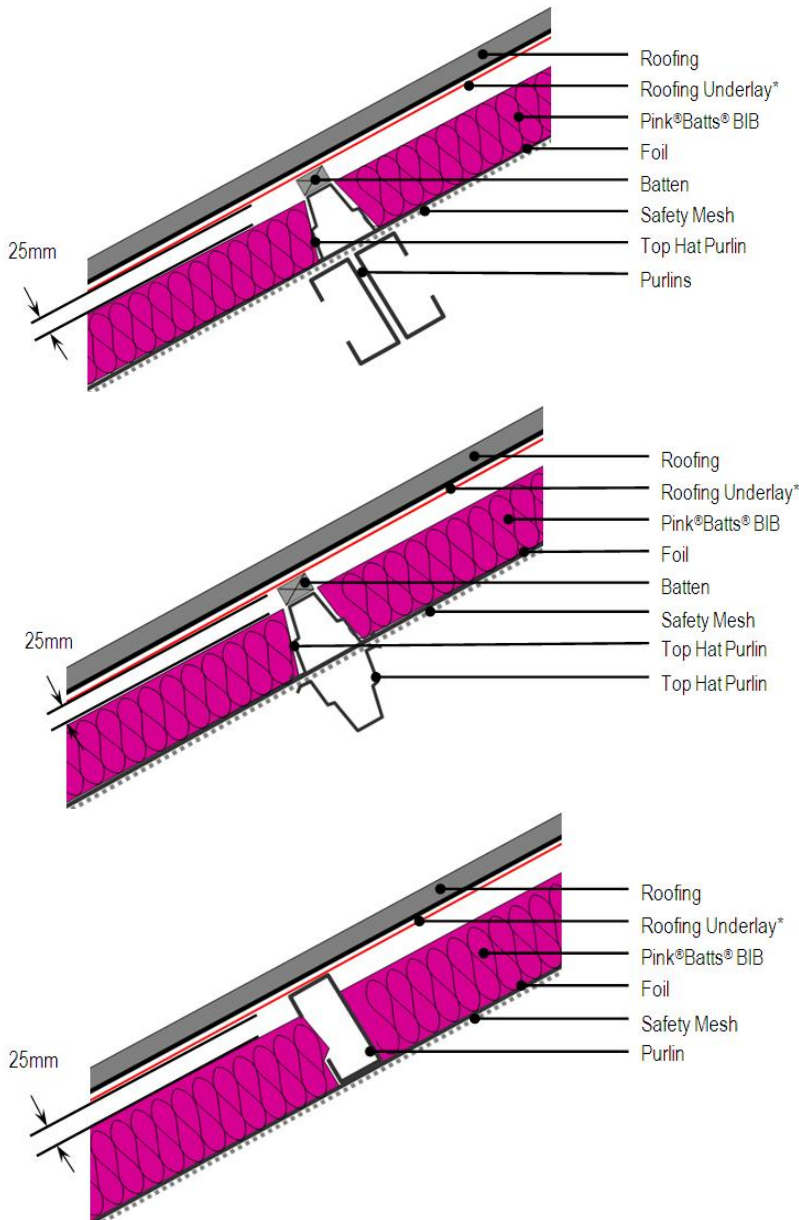


THERMAL INSULATION

Pink® Batts® BIB

Installation Instructions: Roof Applications continued...

Commercial Roof Insulation Installation



*Roofing Underlay may require additional support depending on underlay specified and purlin spacing

PRODUCT DATA SHEET

THERMAL INSULATION



Pink® Batts® BIB

Installation Instructions: Wall Applications

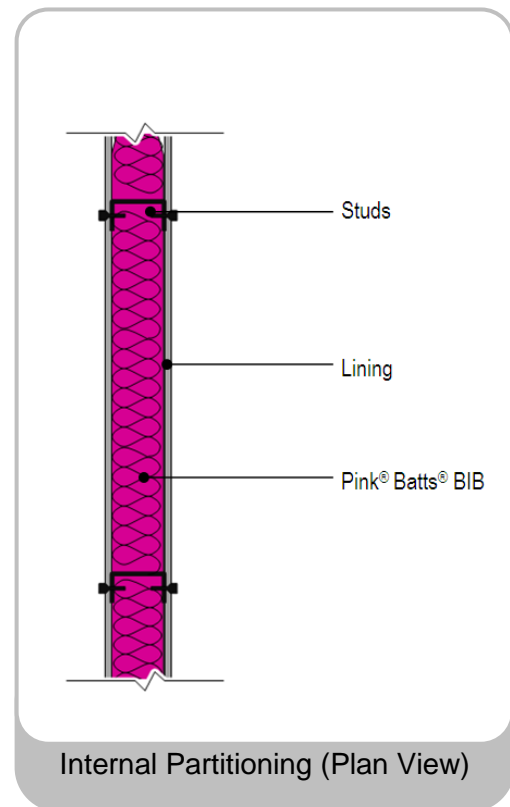
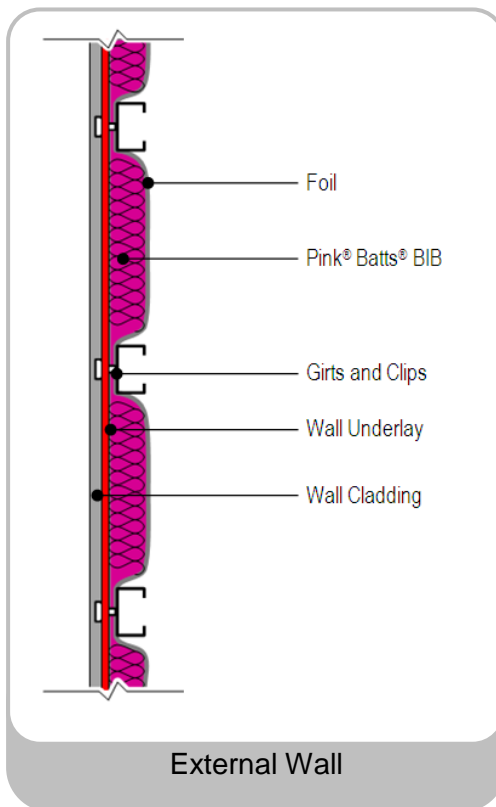
The methods of application described in this document are the most commonly used in New Zealand and should not be taken as specific design

External Wall Installation:

- Ensure the product is installed dry. If the product is wet, replace before installing
- Insulation should be firmly fixed to the top of the wall structure
- Insulation should be run vertically between girts and wall cladding
- A wall underlay must be placed between the wall cladding and insulation
- Temporary fixing maybe necessary

Caution: Electrical cables and equipment partially or completely surrounded with bulk thermal insulation may overheat and fail. This applies to wiring installed prior to 1989

PRODUCT DATA SHEET





THERMAL INSULATION

Pink® Batts® BIB

Specification Notes

State the following:

Product Required:

Pink® Batts® Building Insulation Blanket and required R-value

Installation Service:

PinkFit® Installation Service and PinkFit® Guarantee Certificate

Product Specifications

Product	Product Code	BRANZ Appraised	R-value (m ² ·°C/W)	Nominal Thickness (mm)	Size	Pieces per Pack	Area per Pack (m ²)
Pink® Batts® BIB R1.2	7250001		1.2	50	1200mm x 12m	2	28.8
Pink® Batts® BIB R1.8	7270001	●	1.8	75	1200mm x 8m	2	19.2
Pink® Batts® BIB R2.4	7210052		2.4	100	1200mm x 8m	2	19.2
Pink® Batts® BIB R2.6	7200076		2.6	110	1200mm x 6m	2	14.4
Pink® Batts® BIB R3.2	7200450		3.2	135	1200mm x 8m	1	9.6

Custom lengths and facings are available, subject to minimum order quantities. Please contact our customer service teams (0800 PINK BATTs) for further information on availability, lead times etc.

Storage

Pink® Batts® insulation must be protected from damage and weather. Store under cover in clean, dry conditions

Accreditations/Appraisals/Certifications



Tasman Insulation New Zealand Ltd
Certified QMS



Tasman Insulation New Zealand Limited
9-15 Holloway Place, Penrose,
Auckland,
New Zealand

(1) This data sheet may have been superseded. Please refer to www.pinkbatts.co.nz for the most current information. This datasheet supersedes all previous versions. (2) Tasman Insulation New Zealand Ltd retains the right to change specifications without prior notification. (3) Do not use this product for any application not detailed in this data sheet. (4) Recommendations and advice regarding the use of this product are to be taken as a guide only. The purchaser should ascertain the suitability of this product for the particular end-use situation intended and when used in conjunction with other products. (5) Consult Tasman Insulation New Zealand Ltd for further information. (6) All claims about this product are subject to any variation caused by normal manufacturing process and tolerances. (7) The liability of Tasman Insulation New Zealand Ltd and its employees and agents for any errors or omissions in this data sheet or otherwise in relation to the product is limited to the fullest extent permitted by law. Except where the consumer acquires the goods for the purposes of a business, any rights a consumer may have under the Consumer Guarantees Act are not affected. (8) This information is provided without prejudice to Tasman Insulation New Zealand Ltd standard terms and conditions of sale.

Please consider the environment before printing this document

1028 rev A

Jan 09

Page 6 of 6

PRODUCT DATA SHEET

For further information visit www.pinkbatts.co.nz or call 0800 PINK BATTs (746 522)