

Erosion & Sediment Control

- > BioCoir™
- > BioWool™
- > Landlok®
- > Pyramat®
- > SiltFence™
- > SiltSock™
- > SquarePegs™



BioCoir™

Biodegradable Coconut Matting for Erosion and Sediment Control.

BioCoir™ is a biodegradable coconut fibre matting for erosion and sediment control and landscaping applications. BioCoir™ is ideal for protecting cut faces and exposed soil from erosion due to wind and water.

In addition to the erosion control function, Cirtex BioCoir™ allows moisture penetration to assist vegetation establishment while insulating the seed and root zones from extremes of heat.

BioCoir™ is available in two grades, BC300 for shallow slopes and protected areas, and BC450 for steeper slopes and more exposed sites.

INSTALLATION

Prepare the ground by clearing away any rocks and debris and level as much as possible to ensure the BioCoir™ will have good ground contact.

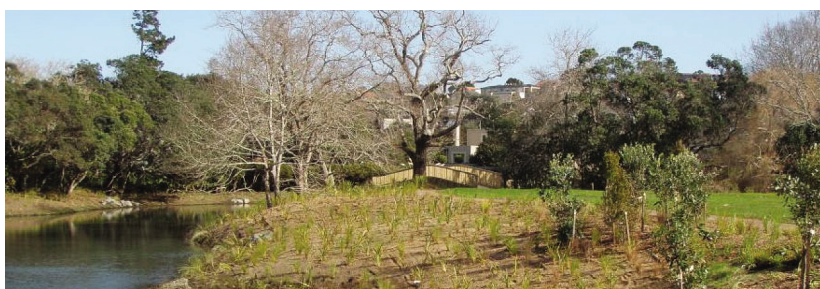
On slopes, anchor the matting in a 150mm trench at the top of the slope and roll down the slope, overlapping rolls by 100mm.

Pin the BioCoir™ to the ground with Cirtex 230mm Ground Staples, using 1 staple per m² on flat and gentle slopes, and up to 4 staples per m² on steeper slopes. BioCoir™ can be hydroseeded if required.

FEATURES AND BENEFITS

- Biodegradable
- Promotes growth of vegetation
- Aesthetic advantages over synthetic products
- Protects exposed soil from wind and water
- Suppresses weeds
- Retains moisture
- Made from sustainable natural coconut fibres
- Available in two grades BC300 and BC450

See pages 64, 65 for SquarePeg Ground Pins



BIOCOIR

Grade	Roll Size	Area
BC300	1m x 25m	25m ²
	2m x 50m	100m ²
BC450	2m x 25m	50m ²
	2.4m x 50m	120m ²



BioWool™

Wool Matting

Cirtex BioWool™ is a biodegradable wool matting for erosion and sediment control and landscaping applications. BioWool™ is ideal for protecting cut faces and exposed soil from erosion due to wind and water and around horticultural plantings.

In addition to the erosion control function, BioWool™ allows moisture penetration to assist vegetation establishment while insulating the seed and root zones from extremes of heat.

BioWool™ is non-woven, 100% Pure wool matting and is manufactured in New Zealand using recycled wool and fleece wool making it a sustainable resource product.

APPLICATIONS

- Steepened slopes
- Road, rail and sound barrier embankments
- Low flow stormwater channels
- Culvert outlets and washout drains
- Highly erodible soils
- Heavy rainfall areas
- Coastal and seashore protection
- Parks, Amenity areas, Golf courses and Sports grounds
- Quarries and landfills
- Facing for the DuraMesh Reinforced Soil System

FEATURES AND BENEFITS

- Fully biodegradable providing plants with nutrients as it degrades making it an environmentally friendly product
- Allows water to pass through and reduces evaporation
- Provides a temperate environment for plants reducing the effects of colder weather
- Suppresses weeds allowing better establishment of younger plants and saving time spent controlling weeds
- Reduces the need for chemical sprays
- Aesthetic advantages over synthetic products
- Protects exposed soils from wind and water
- Made from sustainable wool

BIOWOOL

Grade	Roll Size	Area
BW400	1m x 50m	50m ²
BW400	2m x 50m	100m ²



See pages 64, 65 for
SquarePeg Ground Pins



Landlok® & Pyramat®

Turf Reinforcement Matting

Landlok® and Pyramat® grass reinforcement systems allow the use of eco friendly and aesthetically enhanced vegetated surfaces on steep slopes and swales where previously unsightly hard armour systems were required. Soil loss through water borne forces is a major environmental issue today.

These unique 3 dimensional mats are designed specifically for high flow areas and feature exceptional strength, UV resistance, and shear stress performance. Landlok® Turf Reinforcement Mats (TRM's) are perfect for moderate to high flow storm water channels, banks and steep slopes where both immediate and long term erosion control are needed.

Landlok® TRM's trap more seed, soil and water than traditional hard armour products, yielding faster and fuller vegetation.

Pyramat® 2nd generation high performance Turf Reinforcement Mats (HPTRM's) feature a patented matrix of X3® fibre pyramids that keep soil in place under high flow conditions.

Unique woven construction can provide up to 10 times the tensile capacity of other synthetic erosion mats with even greater shear capacity, improved UV resistance, longevity and improved flexibility.

Download more information on
Landlok® and Pyramat® from
www.cirtex.co.nz

Product	Roll Size	Area
Landlok 300	2.6m x 32.3m	83.98m ²
Landlok 450	2.0m x 42.2m	84.4m ²
Pyramat	2.6m x 27.4m	71.24m ²



SEE THE DIFFERENCE

**X3®
TRM
FIBRE**

**CONVENTIONAL
TRM
FIBRE**

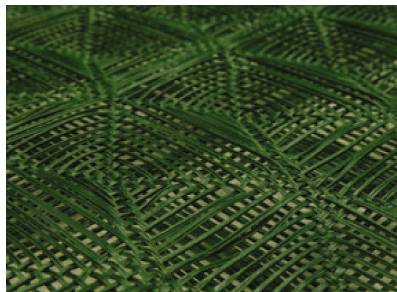


X3® 3-dimensional fibres are incorporated to create a thick matrix of voids to trap and house more sediment, soil and water to promote rapid vegetation growth. These features and superior tensile strength double the chance for long term vegetation survival.



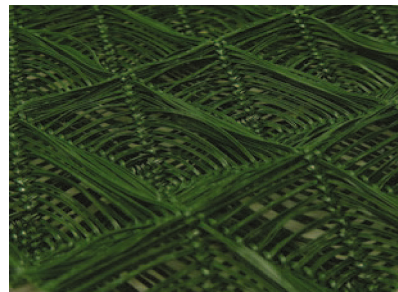
LANDLOK® 450 STITCH-BONDED TRM

- 1st generation TRMs
- Moderate-flow channels, bank protection and steep soil slopes



LANDLOK® 300 WOVEN TRM

- 2nd generation TRMs
- Moderate-flow channels, bank protection and steep soil slopes where greater loading and/or survivability is required

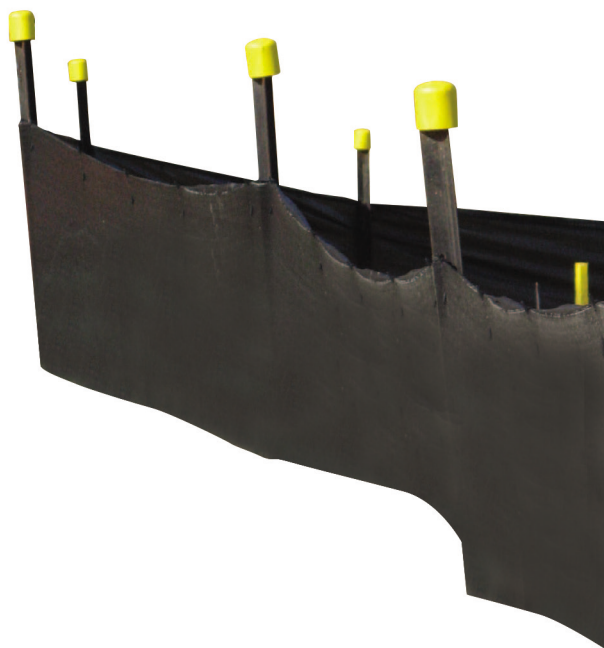


PYRAMAT® WOVEN HPTRM

- HPTRMs
- High-flow channels, extreme slopes, pipe inlets and outlets and arid/semi-arid applications

SiltFence™

The Woven GeoTextile for containing sediment run off in a wide range of applications



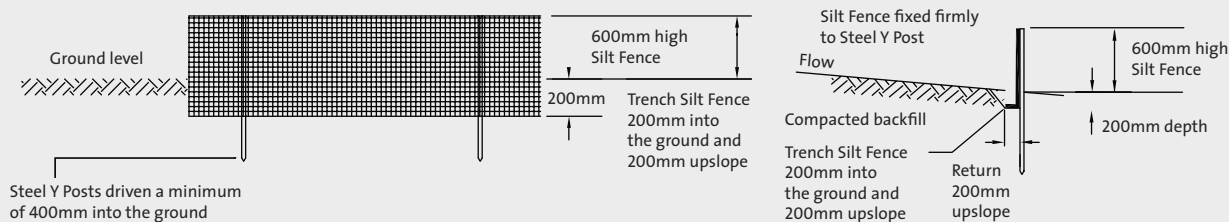
FEATURES AND BENEFITS

- High strength woven Slit-Film SiltFence™
- Filters out solids while allowing water flow
- UV stabilised
- Meets the requirements of Local Authorities for a primary barrier against site runoff
- Steel Y Posts, Safety Caps, Fastening Clips/Pins and Galvanised Wire also available

Super SiltFence™ also available – This requires the addition of wire mesh backing to increase the strength.

STANDARD SILT FENCE INSTALLATION

Steel Y Post spacing can be increased from 2 metres to 4 metres if supported by a 2.5mm diameter high tensile wire along the top with clips every 200mm.



For installation information on Super SiltFence™ visit www.cirtex.co.nz

Code	Product	Roll Size
76027	SiltFence™	1m x 50m
76302	Super SiltFence™	1.3m x 50m



SiltSock™

A quick and effective way of managing sediment runoff into culverts and waterways.

FEATURES AND BENEFITS

- Robust polypropylene sock
- Includes handles for carrying and staking
- Quick and easy to use
- Reusable
- Ideal for protecting culverts, drain outflows, stormwater runoff gullies

Made from a high strength UV stabilised polypropylene, SiltSock™ can be filled with a range of mediums including coarse sand, gravel or wood chips.



Code	Product	Roll Size
76029	SiltSock™	1m Unfilled



SquarePegsTM Std

The revolutionary ground cover SquarePeg

In response to many years of market feedback, Cirtex have introduced an all-new ground cover peg for use with geotextiles. Produced in the UK, the large head on the SquarePegTM makes it quicker and easier to install providing superior holding power.

What makes SquarePegTM better?

- Wide "squared-off" head - More retaining area in contact with fabric
- Now with 10 barbs - Greater grip on all 4 sides in hard or soft substrate
- Sturdy, impact-resistant head and shank - Avoid breaking on installation
- Sharp point - Easy penetration of membrane
- 160mm - Extra length - Greater depth for improved anchorage

SQUAREPEGTM STD

Code	Pack Size
0829	25
0830	50
0832	100



SquarePegsTM Bio

The environmentally-friendly ground cover peg

- Ideal for securing BioCoirTM and BioWoolTM ground cover
- Bio-degradable
- No need to remove pegs from the ground after use
- Avoids damage to machinery caused by using Metal pins
- Similar impact-resistant properties to the original SquarePeg

Why use SquarePeg BioTM?

- The barbed shank and robust sections ensure the peg is firmly anchored in the ground
- The peg is polymer based which means it has similar impact-resistant properties to the original SquarePegTM
- The SquarePeg BioTM helps reduce the impact on the environment by reducing material sent to landfill sites

SQUAREPEGTM BIO

Code	Pack Size
0834	25
0835	50
0837	100

Contact us:

Ph: +649 625 4389

email: civil@tropex.co.nz



TROPEX CIVIL



**OUR EXPERIENCE
YOUR SUCCESS**

Tropex Civil provides for projects in the Pacific Islands and Papua New Guinea only